



**BOOTHBAY HARBOR BOAT CLUB**  
 156 Western Ave, West Boothbay Harbor, ME  
**Boothbay Harbor Regatta**  
 July 23-24, 2011

**SAILING INSTRUCTIONS (updated 7/22/11)**

**1 RULES**

- 1.1 The regatta will be governed by the rules as defined in The Racing Rules of Sailing.
- 1.2 The Scoring Penalty, RRS 44.3, will be used when a boat may have broken a rule of Part 2 and rule 31. RRS 44.2 will not apply.

**2 NOTICE TO COMPETITORS**

Notices to competitors will be posted on the official notice board in the Casino.

**3 CHANGES TO SAILING INSTRUCTIONS**

Any changes to sailing instructions will be posted before 0900 on the day they will take effect, except that any change to the schedule of races will be posted by 1600 on the day before it will take effect.



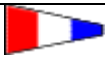
**4 SIGNALS MADE ASHORE**

- 4.1 Signals made ashore will be displayed from the flag pole on the dock at BHYC.
- 4.2 When flag AP is displayed ashore, '1 minute' is replaced with 'not less than 45 minutes' in race signal AP.

**5 SCHEDULE**

- 5.1 Saturday, July 23 – First scheduled warning is at 1130. Multiple races may be sailed for all Divisions except Cruising.
- 5.2 Sunday, July 24 – First scheduled warning is 1100. Multiple races may be sailed for all Divisions except Cruising. No warning after 1500.

**6 DIVISIONS AND CLASS FLAGS**

Division	Class Flag
Division 1	Numeral pennant 1 
Division 2	Numeral pennant 2 
Division 3	Numeral pennant 3 
Cruising	Blue flag
BHOD	BHOD Class Flag

**7 COURSES**

**7.1 Cruising Division:**

- 7.1.1 The Cruising Division will sail one race each day around government marks and/or drop marks set in the Boothbay Region including Boothbay Harbor and islands, Damariscotta River, and Sheepscoot Bay.
- 7.1.2 Courses will be displayed on the race committee signal boat the showing mark identifier and a **+ sign** if the mark is to be left to starboard. All other marks are to be left to port.

**An example** is shown below:

**Start** between the signal boat and an orange tetrahedron on the port side of the signal boat

<b>S +</b>	Mark S to starboard
<b>L</b>	Mark L to port
<b>U</b>	Mark U to port

**Finish** between the signal boat and a small yellow ball on the starboard side of the signal boat

- 7.1.3 NOTE - Boats shall not sail between mark "J" and Ocean Point when mark "J" is not a mark of the course. Boats shall not sail between Fisherman's Island and The Hypocrites or between Tumbler Island and Spruce Point.

**7.2 All other Divisions:**

- 7.2.1 Courses may be windward / leeward courses around drop marks as diagrammed in Appendix B.
- 7.2.2 The course identifier, approximate magnetic bearing and distance in nautical miles to the first mark will be displayed from the race committee signal boat.

**An example** is shown below:

<b>5</b>	Five legs, finishing to weather
<b>270</b>	Approx mag bearing to weather mark
<b>1.2</b>	1.2 nm to weather mark

- 7.2.3 Courses may also use marks from Appendix A, displayed as described in 7.1.2 and 7.1.3.
- 7.3 Courses will be announced on VHF Channel 72 and displayed on the signal boat prior to the warning signal for each race.

## **8 MARKS**

- 8.1 Cruising Division marks are described in Appendix A. Drop marks will be 8' orange tetrahedrons.
- 8.2 Drop marks for all other Divisions will be 5' yellow inflatables.
- 8.3 The start mark will be a 5.5' orange tetrahedron.
- 8.4 The finish mark will be a 2.5' orange tet.

## **9 THE START**

- 9.1 The approximate location of the starting area will be announced at the Skippers' Meetings at BHYC and on VHF Channel 72 at approximately 1030 on Sat and 1000 on Sun.
- 9.2 The starting line will be between a staff displaying a yellow flag on the signal boat and the course side of an orange tetrahedron on the port side of the signal boat.
- 9.3 The starting order for the first race of the day will be:
  - Division 1
  - Division 2
  - Division 3
  - Cruising
  - BHOD
- 9.4 For subsequent races, classes will be started as soon as all boats in that class have finished.
- 9.5 Different classes may be started together at the discretion of the Race Committee.
- 9.6 The Race Committee will attempt to identify recalled boats by hail or broadcast over VHF channel 72. Failure of a boat to see or hear her recall notification will not be grounds for redress. The failure to hail, or the hail of some but not all, or untimely hail shall not be grounds for granting redress.

## **10 THE FINISH**

The finish line will be between a staff displaying a yellow flag on the signal boat and the course side of the finish mark on the starboard side of the signal boat.

## **11 TIME LIMITS**

- 11.1 **Cruising Division** - The time limit for the first boat to sail the course and finish is 4 hours. Boats failing to finish within 2 hours after the first boat of the division sails the course and finishes will be scored Did Not Finish, without hearing, changing rules 35, A4 and A5.
- 11.2 **All other Divisions** - The time limit for the first boat to sail the course and finish is 3 hours. Boats failing to finish within 1 hour after the first boat of the division sails the

course and finishes will be scored Did Not Finish, without hearing, changing rules 35, A4 and A5.

## **12 PROTESTS AND REQUESTS FOR REDRESS**

- 12.1 Protest forms are available on the board in the Casino.
- 12.2 Protests and requests for redress shall be delivered to the race officer with 60 minutes after the signal boat has docked.

## **13 SCORING**

- 13.1 One race is required to be completed to constitute the regatta.
- 13.2 Individual races will be scored using PHRF Time on Distance.
- 13.3 Regatta results will be determined using the Low Point System, with all races included in the regatta score.

## **14 RADIO COMMUNICATION**

The race committee will monitor VHF channel 72 for emergency transmissions. The race committee may also be using VHF channel 72 for working communications, and may employ an "open mike" policy. A boat shall neither make radio transmissions while racing nor receive radio communications not available to all boats, except for emergencies. This restriction also applies to cellular telephones and other electronic devices. Boats may monitor VHF channel 72, but are advised that any race committee communications are unofficial, and made either for race management purposes or as a courtesy to the competitors.

## **15 SAFETY**

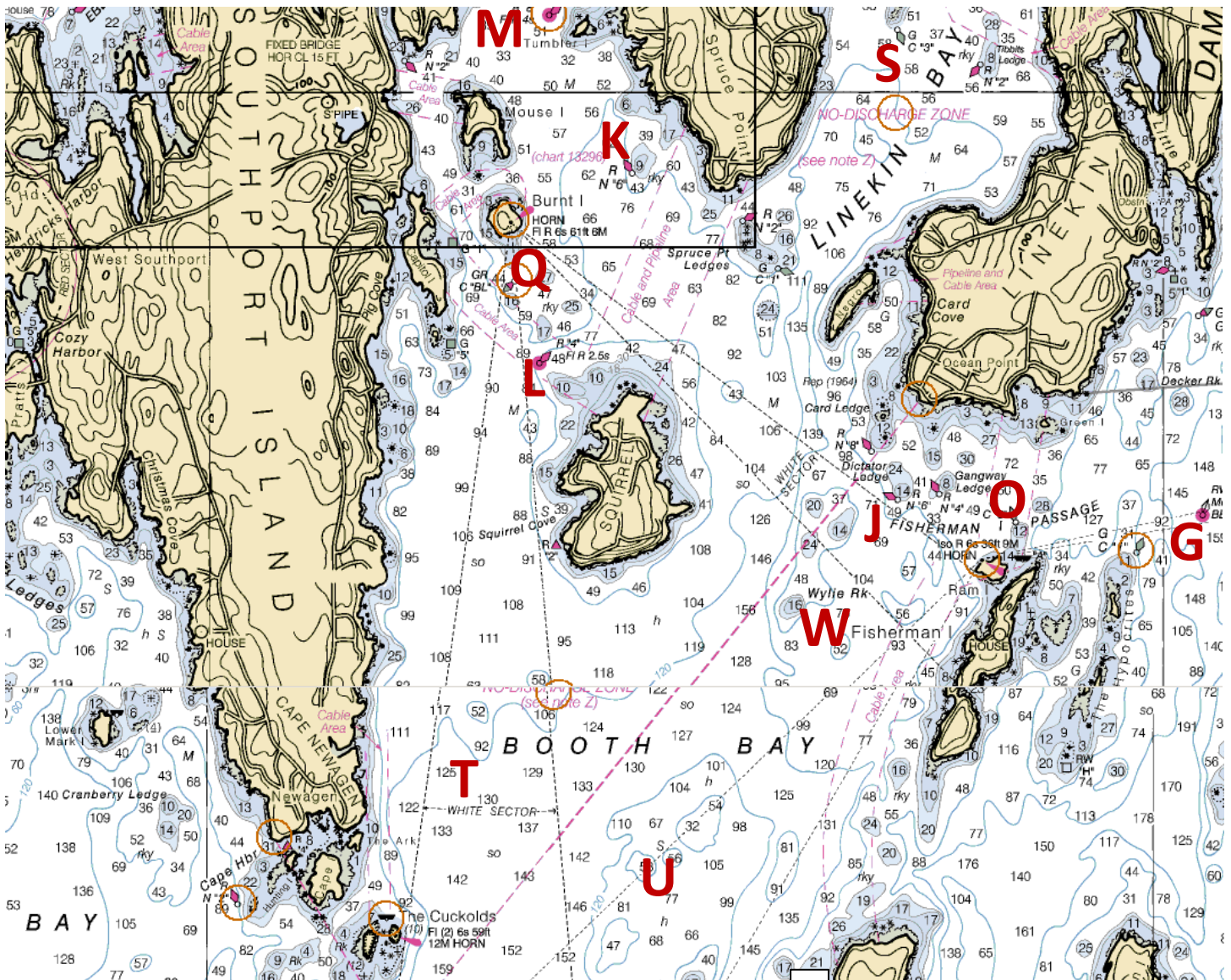
- 15.1 All boats are requested to check-in with the Race Committee before the start of the first race each day by sailing past the RC signal boat on starboard tack and hailing their sailing number, and receiving confirmation from the Race Committee, or by calling on VHF channel 72.
- 15.2 A boat that retires must notify the RC as soon as possible.

## **16 DISCLAIMER OF LIABILITY**

Competitors participate in the regatta entire at their own risk. See rule 4, Decision to Race. The organizing authority will not accept any liability for material damage or personal injury or death sustained in conjunction with or prior to, during, or after the regatta.

## Appendix A – Possible Marks for the Cruising Division

ID	Approx Lat/Long	Description
M	N 43 50.3 / W 069 38.2	R “8” Fl R 4s NW of Tumbler Island
G	N 43 48.4 / W 069 34.8	RW Bell MO(A) “HL” 0.88 nm NE by E of Ram Island Light
J	N 43 48.5 / W 069 36.4	N “6” in Fisherman Island Passage
K	N 43 49.7 / W 069 37.7	Portable mark near N “6” off Spruce Point, Boothbay Hbr
L	N 43 48.9 / W 069 38.2	R “4” Fl R 2.5s NW of Squirrel Island
M	N 43 50.3 / W 069 38.2	R “8” Fl R 4s NW of Tumbler Island
O	N 43 48.4 / W 069 35.8	G can “3” between Ocean Point and Ram island
Q	N 43 49.3 / W 069 38.4	GR “BL” S of Burnt Island
S	N 43 50.2 / W 069 36.4	G”3” S of Cabbage Island in Linekin Bay
T	N 43 47.6 / W 069 38.5	Drop mark at the 52’ spot NE of Newagen
U	N 43 47.1 / W 069 37.4	Drop mark at the 32’ spot S of Squirrel
W	N 43 48.1 / W 069 36.8	Drop mark at 16’ spot W of Fisherman Island at Wylie Rock
A	N 43 46.4 / W 069 39.0	G BELL “1C” S of Cuckolds Light
F	N 43 44.7 / W 069 37.1	RW “TM” Gong SE of Mark A
X	TBD	Drop mark to be determined by Race Committee



A



**Appendix B – Courses for all Divisions Except Cruising**

Course 3	Course 4	Course 5
<p>Start, 1 (port), 2 (port), finish</p>	<p>Start, 1 (port), 2 (port), 1 (port), finish</p>	<p>Start, 1 (port), 2 (port), 1 (port), 2 (port), finish</p>

***Thanks to our sponsors***

